

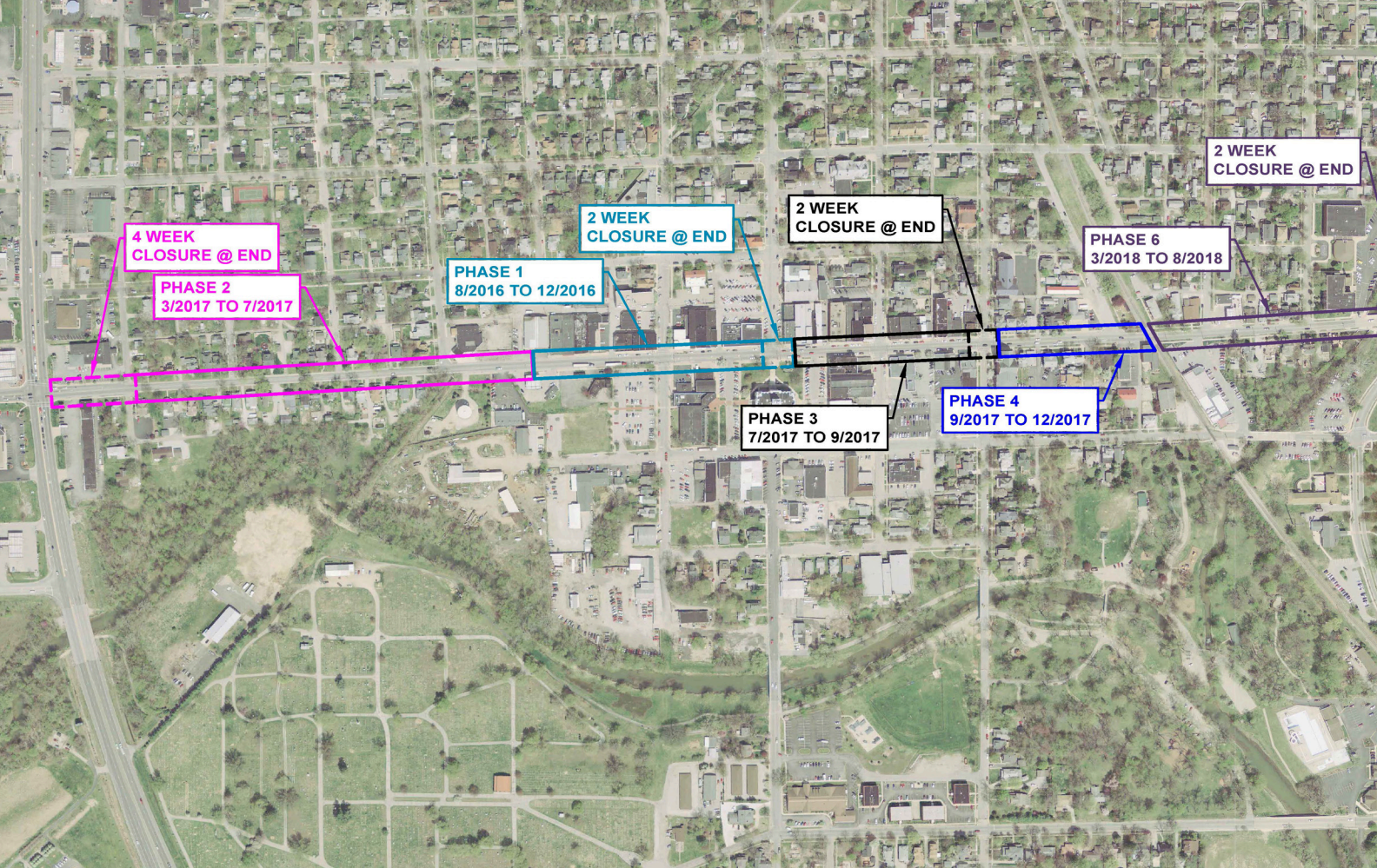
# JEFFERSON STREET

Construction  
Project

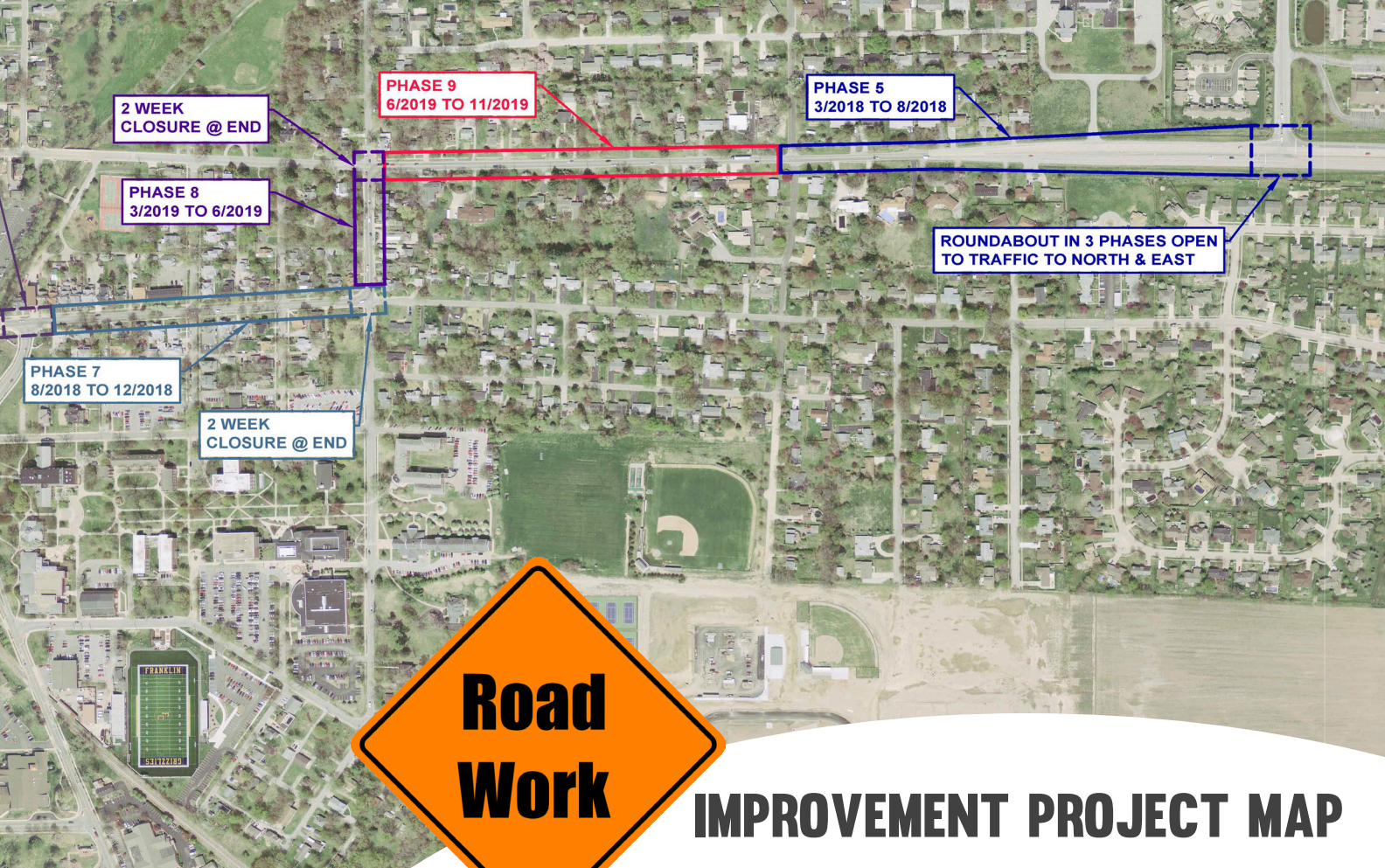
Franklin, Indiana











2 WEEK  
CLOSURE @ END

PHASE 9  
6/2019 TO 11/2019

PHASE 5  
3/2018 TO 8/2018

PHASE 8  
3/2019 TO 6/2019

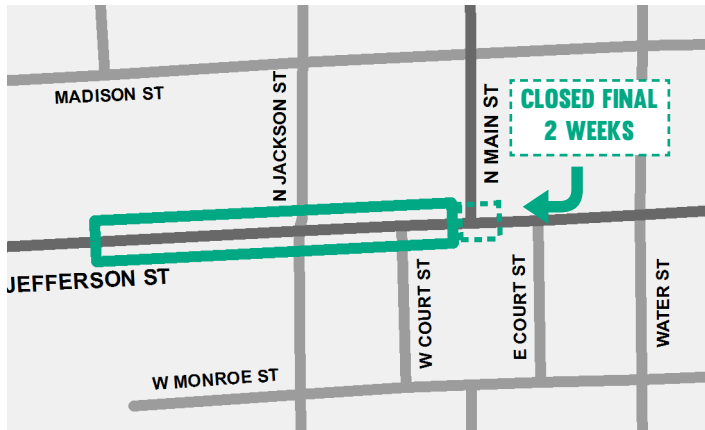
ROUNDABOUT IN 3 PHASES OPEN  
TO TRAFFIC TO NORTH & EAST

PHASE 7  
8/2018 TO 12/2018

2 WEEK  
CLOSURE @ END



# IMPROVEMENT PROJECT MAP

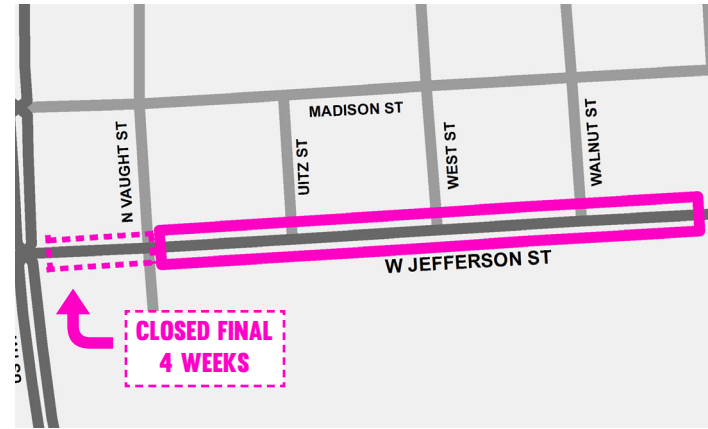


# PHASE 1

8/2016 TO 12/2016

Phase includes Jefferson Street from N. Main Street to the Admiral Gas Station. N. Main Street Intersection will be open until final 2 weeks of the phase.

**\*\*ALL SCHEDULES SUBJECT TO CHANGE!**

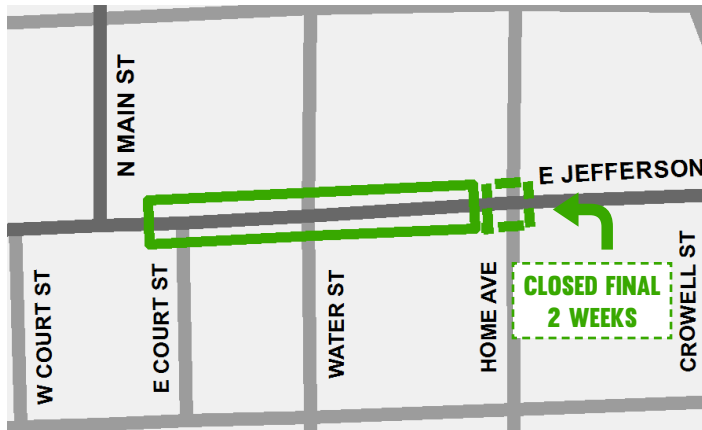


# PHASE 2

3/2017 TO 7/2017

Phase includes Jefferson Street from US-31 to Admiral Gas Station. US-31 to Vaught Street to remain open until the end of the phase and will be closed for the final 4 weeks of this phase.

**\*\*ALL SCHEDULES SUBJECT TO CHANGE!**

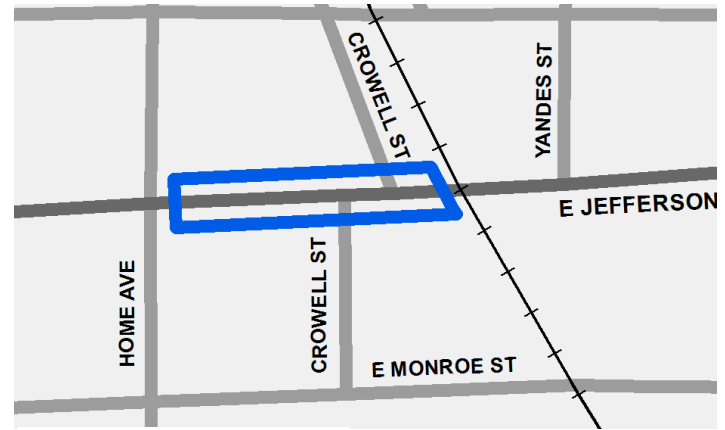


## PHASE 3

7/2017 TO 9/2017

Phase includes Jefferson Street from N. Main Street to Home Avenue. N. Main Street will remain open, while Home Avenue will be closed for the final 2 weeks of the phase.

**\*\* ALL SCHEDULES SUBJECT TO CHANGE!**

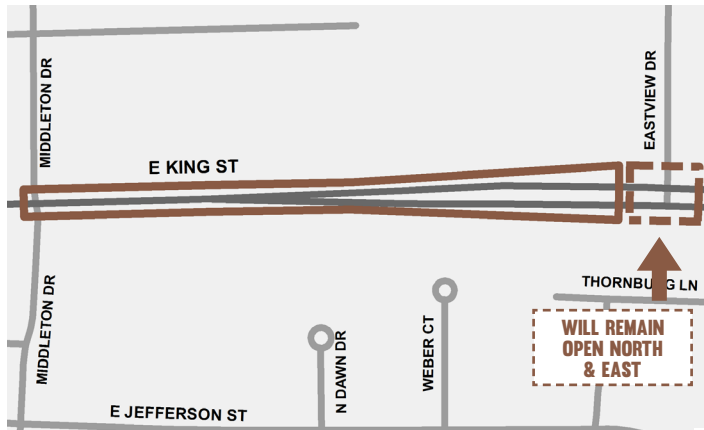


## PHASE 4

9/2017 TO 12/2017

Phase includes Jefferson Street from Home Avenue to the railroad crossing. Home Avenue will be open during this phase.

**\*\* ALL SCHEDULES SUBJECT TO CHANGE!**

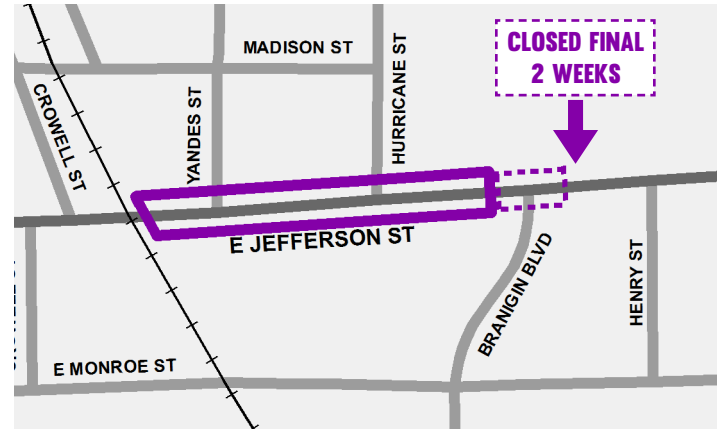


## PHASE 5

3/2018 TO 8/2018

Phase includes King St. from Middleton Drive to Eastview Drive. Middleton Drive will be closed during this phase, while the Eastview Drive roundabout will be constructed in phases allowing traffic to travel to the east and the north.

**\*\*ALL SCHEDULES SUBJECT TO CHANGE!**



## PHASE 6

3/2018 TO 8/2018

Phase includes Jefferson Street from the railroad crossing to Branigin Boulevard. Branigin Boulevard will be open until the final 2 weeks of this phase.

**\*\*ALL SCHEDULES SUBJECT TO CHANGE!**

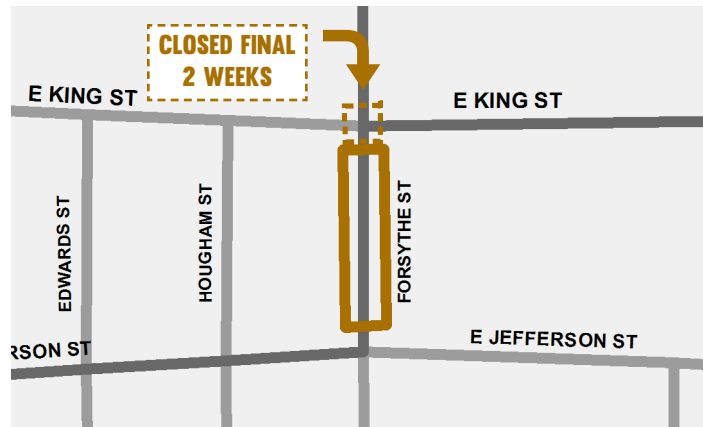


## PHASE 7

8/2018 TO 12/2018

Phase includes Jefferson St. from Branigin Boulevard to Forsythe Street. Branigin Boulevard will be open during this phase, while the Forsythe St. intersection will be closed for the final 2 weeks of this phase.

**\*\*ALL SCHEDULES SUBJECT TO CHANGE!**



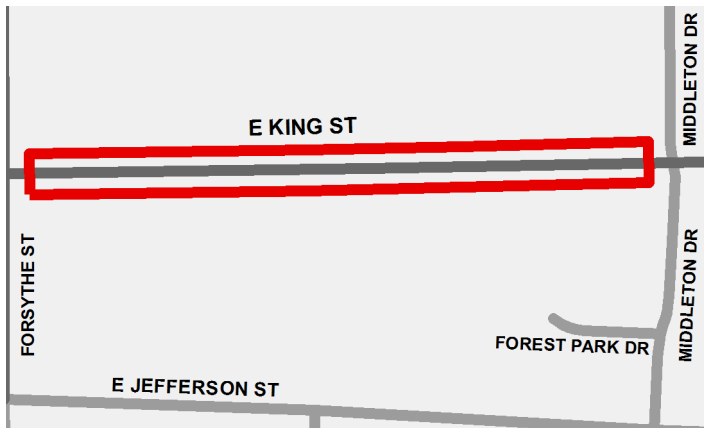
## PHASE 8

3/2019 TO 6/2019

Phase includes Forsythe Street from Jefferson Street to King Street. Jefferson Street intersection will remain open during this phase, while the King Street intersection will be closed for the final 2 weeks of this phase.

**\*\*ALL SCHEDULES SUBJECT TO CHANGE!**





## PHASE 9

### 6/2019 TO 11/2019

Phase will include King Street from Forsythe Street to Middleton Drive. Both Forsythe Street and Middleton Street intersections will remain open during construction.

**\*\*ALL SCHEDULES SUBJECT TO CHANGE!**

## FREQUENTLY ASKED QUESTIONS

- 1. HOW LONG WILL THE ROAD BE CLOSED?** *The project is being constructed in multiple phases to limit closure times.*
- 2. HOW WILL I RECEIVE MY MAIL; WILL MAIL DELIVERY BE DISCONTINUED DURING THE PROJECT?** *Mail delivery will not be affected by the project because detour routes will be established, and most of the mail delivered on the project is on foot.*
- 3. HOW/WHERE WILL MY TRASH BE PICKED UP?** *Existing trash services will not be affected by the project because detour routes will be established. The contractor/project staff will coordinate with property owners and trash services for pick up.*
- 4. HOW WILL EMERGENCY PERSONNEL ACCESS OUR HOMES AND BUSINESSES WHILE THE ROAD IS CLOSED?** *Emergency personnel can follow the established detour routes to access your home in the event of an emergency. Please be assured that we are constantly communicating updates to emergency personnel.*
- 5. WILL SIDEWALKS ALONG STORE FRONTS BE CLOSED DURING CONSTRUCTION?** *Pedestrian Access will be provided to businesses during construction.*
- 6. WHERE CAN I FIND OUT MORE ABOUT THE PROJECT?** *[franklin.in.gov](http://franklin.in.gov) and [crossroadengineers.com](http://crossroadengineers.com)*



**PAY  
ATTENTION  
TO THE  
ROAD**

“Listen to the signs”, Watch brake lights on vehicles ahead & Watch traffic around you & be prepared to react

**WATCH YOUR  
STEP ON  
TEMPORARY  
WALKS**

**EXPECT THE UNEXPECTED**

Workers, work vehicles, or equipment may enter your lane unpredictably

**SLOW VEHICLE SPEED**

**CONSTRUCTION  
TIPS**

**STAY ALERT  
& MINIMIZE  
DISTRACTIONS**

Dedicate your full attention to the roadway and avoid changing the radio station, using a mobile phone, eating, or other distractions that can remove your concentration from the road

**BE  
PATIENT**

**OBEY CONSTRUCTION SIGNAGE  
& FLAG MEN**

**STAY INFORMED**

Check Facebook, Twitter, & Websites for updates

**PLAN AHEAD**

# CONTACT INFO

**CITY OF FRANKLIN**

**WWW.FRANKLIN.IN.GOV**

**CONSTRUCTION@FRANKLIN.IN.GOV**

**OFFICE: (317) 736-3631**



**TRENT NEWPORT**

**CROSSROAD ENGINEERS, P.C.**

**TNEWPORT@CROSSROADENGINEERS.COM**

**OFFICE: (317) 780-1555 EXT. 114**

**CELL: (317) 502-2760**

# HOW TO CHECK FOR UPDATES...

## CONTACT PLANNING & ENGINEERING DEPARTMENT

**PHONE:** (317) 736-3631

**EMAIL:** [construction@franklin.in.gov](mailto:construction@franklin.in.gov)

## CHECK SOCIAL MEDIA



**CITY OF FRANKLIN,  
INDIANA**



**FRANKLININD**

## CHECK OUR WEBSITES

**CROSSROAD ENGINEERS PC** [www.crossroadengineers.com](http://www.crossroadengineers.com)

**CITY OF FRANKLIN** [www.franklin.in.gov](http://www.franklin.in.gov)







**City of Franklin**  
70 E. Monroe  
[www.franklin.in.gov](http://www.franklin.in.gov)  
[construction@franklin.in.gov](mailto:construction@franklin.in.gov)